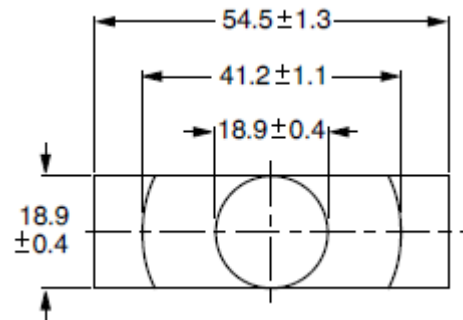
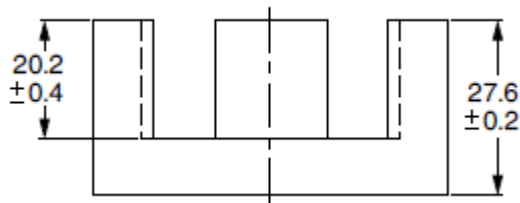


Core ETD54/28/19

Effective core parameters

$\Sigma I/A$	0,454	mm ⁻¹
I_e	127	mm
A_e	280	mm ²
A_{min}	270	mm ²
V_e	35500	mm ³



ETD cores are particularly applicable in low power transformers, thanks to the untypical design - flattened center column, placed asymmetrically. Thanks to this we get compact construction and lowered transformer height in comparison to a similar power transformer on the EE core. Below are examples of core materials we use for the manufacture of our products. These cores are with different slots and AL values. The AL values in the table are given for cores without a slot. For our production we also use cores with different slots, ie with different constant AL, eg: 1375, 410, 235 as well as others made according to individual customer requirements.

The examples of used materials

Material	AL [nH]
3C90	5000 ±25%
3C94	5000 ±25%
3C95	6120 ±25%
3F3	4600 ±25%
N27	4200 +30/-20%
N87	4450 +30/-20%
N97	4600 +30/-20%
F-867	5000 ±25%
F-887	4850 ±25%