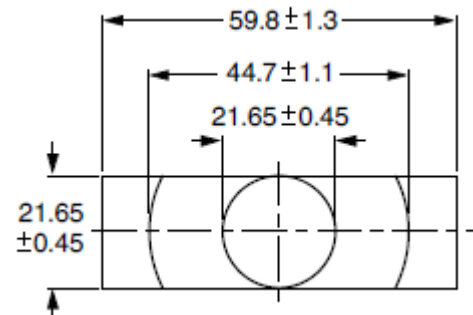
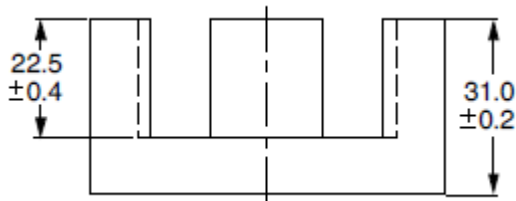


## Core ETD59/31/22

### Effective core parameters

$\Sigma l/A$	0,378	mm <sup>-1</sup>
$I_e$	139	mm
$A_e$	368	mm <sup>2</sup>
$A_{min}$	360	mm <sup>2</sup>
$V_e$	51500	mm <sup>3</sup>



**ETD cores** are particularly applicable in low power transformers, thanks to the untypical design - flattened center column, placed asymmetrically. Thanks to this we get compact construction and lowered transformer height in comparison to a similar power transformer on the EE core. Below are examples of core materials we use for the manufacture of our products. These cores are with different slots and AL values. The AL values in the table are given for cores without a slot. For our production we also use cores with different slots, ie with different constant AL, eg: 1580, 520, 300 as well as others made according to individual customer requirements.

### The examples of used materials

Material	AL [nH]
3C90	6000 ±25%
3C94	6000 ±25%
3C95	7340 ±25%
3F3	5600 ±25%
N27	5000 +30/-20%
N87	5300 +30/-20%
N97	5500 +30/-20%
F-867	5600 ±25%
F-887	5400 ±25%