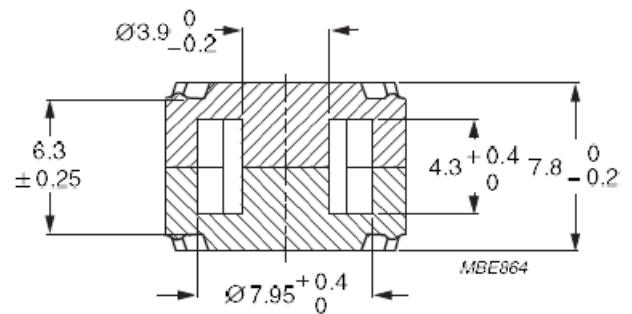
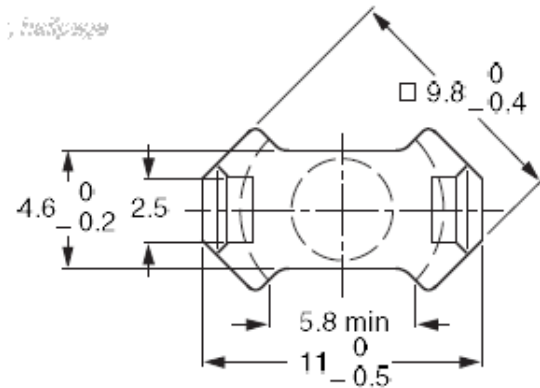


Core RM4/ILP

Effective core parameters

$\Sigma I/A$	1,19	mm ⁻¹
I_e	17,3	mm
A_e	14,5	mm ²
A_{min}	11,3	mm ²
V_e	251	mm ³



RM cores are mainly used in Telecommunication and pulsed transformers, where galvanic separation is required, as well as in chokes and coils and resonant circuits. The shape of the cores enables optimal use of the winding space with very good magnetic shielding. Below are examples of core materials we use for the manufacture of our products. These cores occur with different slots and AL values. AL values are given for cores without slots.

The examples of used materials

Material	AL [nH]
3C90	1400 ±25%
3C94	1400 ±25%
3C95	1610 ±25%
3C96	1250 ±25%
3F3	1200 ±25%
3F35	1000 ±25%
3F4	750 ±25%
3F45	750 ±25%
T38	5000 +40/-30%
N49	950 +30/-20%
N92	1000 +30/-20%
N87	1300 +30/-20%