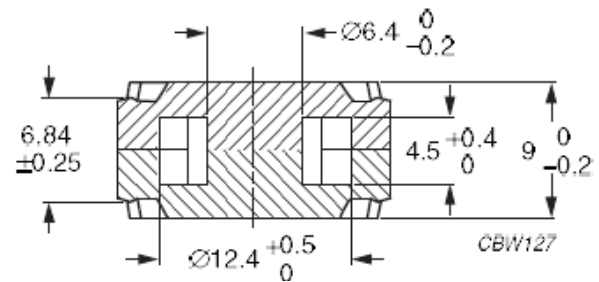
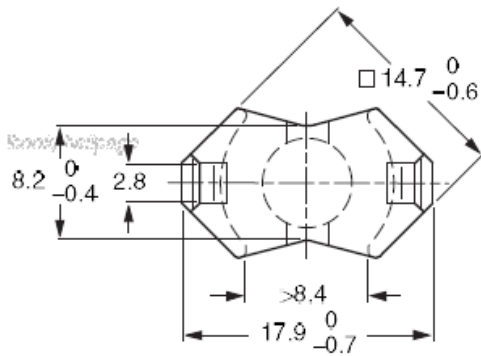


Core RM6/ILP

Effective core parameters

$\Sigma I/A$	0,580	mm ⁻¹
I_e	21,8	mm
A_e	37,5	mm ²
A_{min}	31,2	mm ²
V_e	820	mm ³



RM cores are mainly used in Telecommunication and pulsed transformers, where galvanic separation is required, as well as in chokes and coils and resonant circuits. The shape of the cores enables optimal use of the winding space with very good magnetic shielding. Below are examples of core materials we use for the manufacture of our products. These cores occur with different slots and AL values. AL values are given for cores without slots. For our production we also use cores with different slots of different constant AL such as: 630, 400, 315, 250, 160 and other made according to individual customer requirements.

The examples of used materials

Material	AL [nH]
3B46	4000 ±25%
3D3	1350 ±25%
3H3	2900 ±25%
3C90	3175 ±25%
3C94	3175 ±25%
3C95	3730 ±25%
3C96	2900 ±25%
3F3	2700 ±25%
3F35	2200 ±25%
3F4	1600 ±25%
3F45	1600 ±25%
3E5	10500 +40/-30%
3E6	13000 +40/-30%

T38	10500 +40/-30%
N49	2200 +30/-20%
N92	2300 +30/-20%
N87	3000 +30/-20%