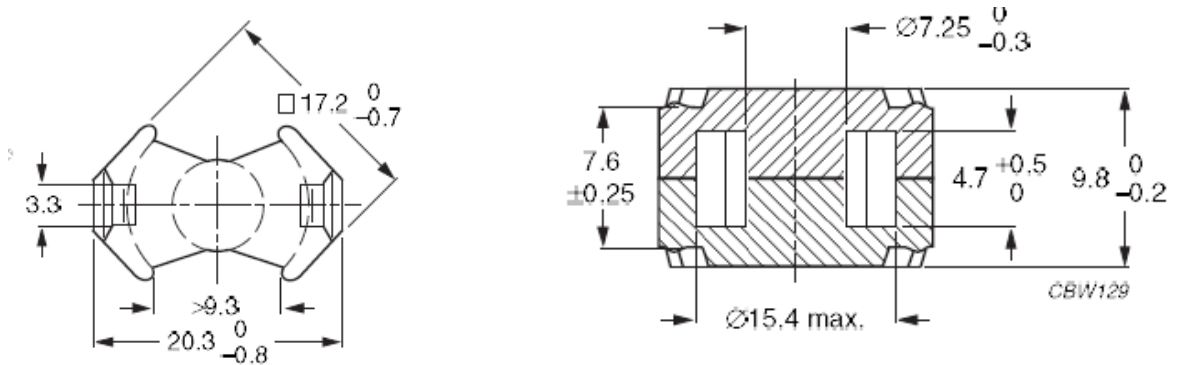


Core RM7/ILP

Effective core parameters

$\Sigma I/A$	0,520	mm ⁻¹
I_e	23,5	mm
A_e	45,3	mm ²
A_{min}	39,6	mm ²
V_e	1060	mm ³



RM cores are mainly used in Telecommunication and pulsed transformers, where galvanic separation is required, as well as in chokes and coils and resonant circuits. The shape of the cores enables optimal use of the winding space with very good magnetic shielding. Below are examples of core materials we use for the manufacture of our products. These cores occur with different slots and AL values. AL values are given for cores without slots.

The examples of used materials

Material	AL [nH]
3C90	3650 ±25%
3F3	3100 ±25%
3F4	1800 ±25%
T38	11500 +40/-30%
N49	2400 +30/-20%
N92	2600 +30/-20%
N87	3300 +30/-20%