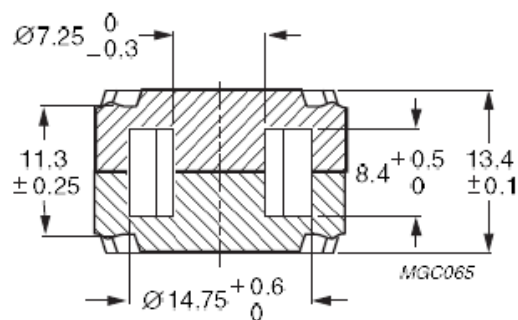
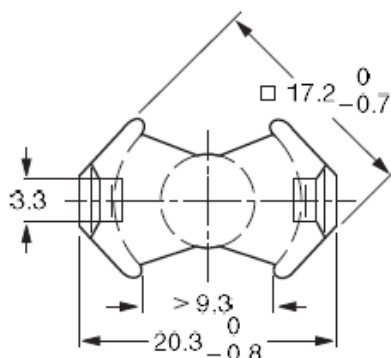


Core RM7/I

Effective core parameters

$\Sigma I/A$	0,680	mm ⁻¹
I_e	30,0	mm
A_e	44,10	mm ²
A_{min}	39,6	mm ²
V_e	1325	mm ³



RM cores are mainly used in Telecommunication and pulsed transformers, where galvanic separation is required, as well as in chokes and coils and resonant circuits. The shape of the cores enables optimal use of the winding space with very good magnetic shielding. Below are examples of core materials we use for the manufacture of our products. These cores occur with different slots and AL values. AL values are given for cores without slots. For our production we also use cores with different slots of different constant AL such as: 250, 160, 100 and other made according to individual customer requirements.

The examples of used materials

Material	AL [nH]
3C90	3000 ±25%
3F3	2500 ±25%
N30	5000 +30/-20%
T38	10000 +40/-30%
N49	1900 +30/-20%
N87	2700 +30/-20%
N97	2700 +30/-20%