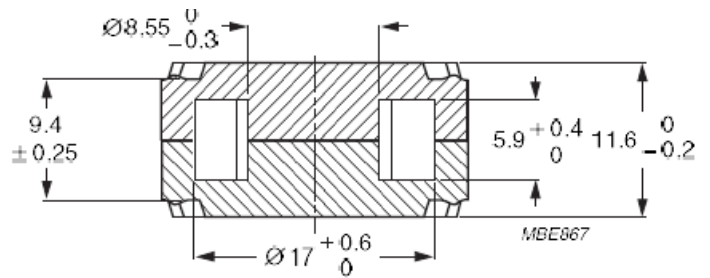
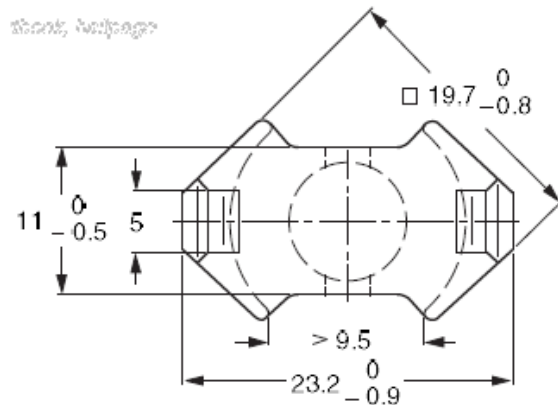


Core RM8/ILP

Effective core parameters

$\Sigma I/A$	0,440	mm ⁻¹
I_e	28,7	mm
A_e	64,9	mm ²
A_{min}	55,4	mm ²
V_e	1860	mm ³



RM cores are mainly used in Telecommunication and pulsed transformers, where galvanic separation is required, as well as in chokes and coils and resonant circuits. The shape of the cores enables optimal use of the winding space with very good magnetic shielding. Below are examples of core materials we use for the manufacture of our products. These cores occur with different slots and AL values. AL values are given for cores without slots.

The examples of used materials

Material	AL [nH]
3B46	6500 ±25%
3D3	1850 ±25%
3H3	4100 ±25%
3C90	4100 ±25%
3C94	4100 ±25%
3C95	4800 ±25%
3C96	3800 ±25%
3F3	3800 ±25%
3F35	3100 ±25%
3F4	2200 ±25%
3F45	2200 ±25%
3E5	16000 +40/-30%
3E6	19500 +40/-30%

N49	2900 +30/-20%
N92	3100 +30/-20%
N87	4100 +30/-20%