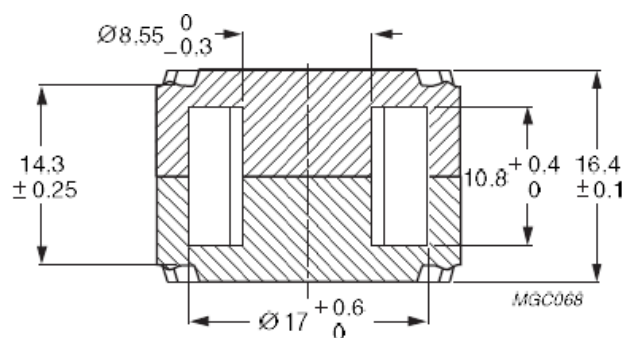
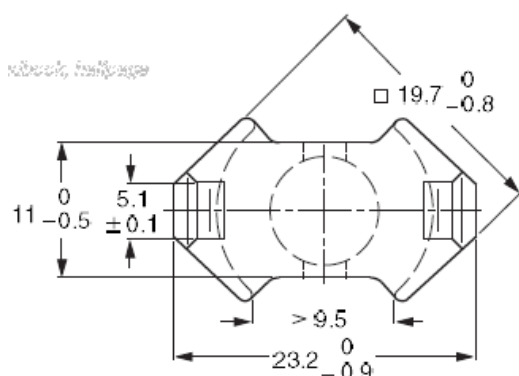


Core RM8/I

Effective core parameters

$\Sigma I/A$	0,604	mm ⁻¹
I_e	38,4	mm
A_e	63,0	mm ²
A_{min}	55,4	mm ²
V_e	2440	mm ³



RM cores are mainly used in Telecommunication and pulsed transformers, where galvanic separation is required, as well as in chokes and coils and resonant circuits. The shape of the cores enables optimal use of the winding space with very good magnetic shielding. Below are examples of core materials we use for the manufacture of our products. These cores occur with different slots and AL values.

AL values are given for cores without slots. For our production we also use cores with different slots of different constant AL such as: 1000, 630, 400, 315, 250, 160, 100 and other made according to individual customer requirements.

The examples of used materials

Material	AL [nH]
3B46	5200 ±25%
3D3	1400 ±25%
3H3	3250 ±25%
3C81	4100 ±25%
3C90	3300 ±25%
3C91	4100 ±25%
3C94	3300 ±25%
3C95	4100 ±25%
3C96	3000 ±25%
3F3	3000 ±25%
3F35	2400 ±25%
3F4	1700 ±25%
3F45	1700 ±25%

3E27	8000 ±25%
3E5	12500 +40/-30%
3E6	15500 +40/-30%
N48	2900 +30/-20%
N30	5700 +30/-20%
T38	12500 +40/-30%
N49	2200 +30/-20%
N87	3300 +30/-20%
N97	3300 +30/-20%
N41	4100 +30/-20%
F-867	3200 ±25%
F-887	3000 ±25%
F-830	6000 ±25%
F-860	9000 ±25%
F-938	13000 ±30%